

# Sunbeam Alpine

Series I, II, III, IV & V

## PARTS LIST

COMMENCING  
CHASSIS NO.

Series I	B9000001
Series II	B9100001
Series III	B9200001
Series IV	B9400001
Series IV	B94100001 Built Up B94600001 C.K.D.
Series V	B395000001 Built Up B395900001 C.K.D.

REVISED  
JUNE 1968

# INDEX TO SECTIONS

For Descriptive Index see  
pages vi to viii

INDEX AND FOREWORD	
ENGINE (Motor) UNIT & ENGINE (Motor) AUXILIARIES — Series I, II, III and IV	A
ENGINE (Motor) UNIT & ENGINE (Motor) AUXILIARIES — (1725)	AA
PETROL (Fuel) PUMP	B
CARBURETTOR — Series I and II	C
CARBURETTOR (Zenith) — Series III	CA
CARBURETTOR (Solex) — Series III and IV	CB
CARBURETTOR (Stromberg) — Series V onwards	CC
CARBURETTOR CONTROLS (Zenith) — Series I, II and III	D
CARBURETTOR CONTROLS (Solex) — Series III and IV (Standard Transmission)	DA
CARBURETTOR CONTROLS (Stromberg) — Series V onwards (Standard Transmission)	DB
CARBURETTOR CONTROLS — Series IV (Automatic Transmission)	E
CLUTCH AND CONTROLS (Standard Transmission)	F
GEARBOX (Standard Transmission) UNIT AND FLOOR CHANGE CONTROL (Up to B94100000)	G
GEARBOX (Standard Transmission) UNIT AND FLOOR CHANGE CONTROL (From B94100001)	GA
GEARBOX (Automatic Transmission) UNIT AND FLOOR CHANGE CONTROL	H
OVERDRIVE (Transmission) UNIT	J
SUSPENSION — FRONT — Series I, II and III	M
SUSPENSION — FRONT — Series IV onwards	MA
REAR AXLE and ROAD WHEELS	N
PROPELLOR SHAFT	P
BRAKES and CONTROLS	Q
STEERING and CONTROLS — Series I and II	R
STEERING and CONTROLS — Series III onwards	RA
SUSPENSION — REAR	S
RADIATOR — Series I and II	T
RADIATOR — Series III onwards	TA
PETROL (Fuel) SYSTEM — Series I and II	U
PETROL (Fuel) SYSTEM — Series III onwards	UA
EXHAUST SYSTEM — Series I and II	V
EXHAUST SYSTEM — Series III onwards	VA
ELECTRICAL EQUIPMENT	W
BODY MOUNTING	X
BODY FITTINGS — Series I and II	YV
BODY FITTINGS — “Le Mans”	YW
BODY FITTINGS — Series III and IV	YX
SPECIAL ACCESSORIES	ZU
TOOLS	ZV
REPLACEMENT SERVICE UNITS	ZW
PARTS and SERVICE PUBLICATIONS	ZX
BOLTS, SCREWS, NUTS and WASHERS	ZY
NUMERICAL INDEX	ZZ

# INDEX

	Page No.		Page No.
<b>BODY FITTINGS—Series I and II</b>			
Body Panels ... ..	YV1 - YV4	Hose ... ..	Q13
Door Fittings ... ..	YV4 - YV6	Handbrake Lever ... ..	Q15
Facia Fittings ... ..	YV8 - YV9	Handbrake Cable ... ..	Q15 - Q16
Folding Head Fittings ... ..	YV10 - YV11	Lever Assembly—Compensator ... ..	Q17
Front Seat Fittings ... ..	YV9	Master Cylinder ... ..	Q5 - Q7
Hardtop Fittings ... ..	YV12 - YV13	Rear Brakes (Drum) ... ..	Q2
Miscellaneous Trim ... ..	YV16 - YV18	Vacuum Servo Unit ... ..	Q8 - Q10
Paint ... ..	YV18	Wheel Cylinder, Rear ... ..	Q3 - Q5
Rear Seat and Battery Fittings ... ..	YV9 - YV10	<b>CARBURETTOR—Series I and II</b> ... ..	C1 - C4
Rear Trunk Fittings ... ..	YV13 - YV14	<b>CARBURETTOR (Zenith)—Series III</b> ... ..	CA1 - CA3
Soft Trim ... ..	YV14 - YV16	<b>CARBURETTOR (Solex)—Series III and IV</b> ... ..	CB1 - CB3
Windscreen (Windshield) ... ..	YV6 - YV8	<b>CARBURETTOR (Stromberg)—Series V onwards</b> ... ..	CC1 - CC2
<b>BODY FITTINGS—"Le Mans"</b>			
Body Panels ... ..	YW1 - YW2	<b>CARBURETTOR CONTROLS (Zenith)—</b>	
Boot Lid and Rear Window ... ..	YW7 - YW8	<b>Series I, II and III</b> ... ..	D1 - D2
Door Fittings ... ..	YW3 - YW4	<b>CARBURETTOR CONTROLS (Solex)—</b>	
Exterior Mouldings ... ..	YW12	<b>Series III and IV (Standard Transmission)</b> ... ..	DA1 - DA2
Facia Fittings ... ..	YW5 - YW6	<b>CARBURETTOR CONTROLS (Stromberg)—</b>	
Front Seat Fittings ... ..	YW6	<b>Series V onwards (Standard Transmission)</b> ... ..	DB1
Hardtop Fittings ... ..	YW7	<b>CARBURETTOR CONTROLS (Automatic</b>	
Miscellaneous Trim ... ..	YW10 - YW11	<b>Transmission)</b> ... ..	E1 - E2
Paint ... ..	YW11	<b>CLUTCH AND CONTROLS (Standard Transmission)</b>	
Quarterlight ... ..	YW4	Clutch Unit ... ..	F1 - F3
Rear Seat and Battery Fittings ... ..	YW6 - YW7	Clutch Pedal ... ..	F6
Screenwasher ... ..	YW5	Master Cylinder ... ..	F7 - F8
Soft Trim ... ..	YW9 - YW10	Slave Cylinder ... ..	F5 - F6
Sparewheel Compartment Lid and Floor ... ..	YW8 - YW9	<b>ELECTRICAL EQUIPMENT</b>	
Windscreen (Windshield) Fittings ... ..	YW4 - YW5	Alternator ... ..	W15
<b>BODY FITTINGS—From Series III</b>			
Body Panels ... ..	YX1 - YX4	Battery ... ..	W18 - W19
Door Fittings ... ..	YX4 - YX7	Cables, Grommets and Connectors ... ..	W23 - W25
Facia Fittings ... ..	YX9 - YX11	Control Box (Regulator) Unit ... ..	W19
Folding Head Fittings ... ..	YX13 - YX14	Control Box—Alternator ... ..	W15
Front Seat Fittings ... ..	YX11 - YX12	Distributor ... ..	W16 - W17
Hardtop Fittings ... ..	YX14 - YX16	Dynamo (Generator) ... ..	W15
Miscellaneous Trim (Standard) ... ..	YX28 - YX30	Flasher System... ..	W21
Miscellaneous Trim ("G.T.") ... ..	YX31 - YX32	Fuse Unit ... ..	W19
Paint ... ..	YX34	Horn ... ..	W22
Rear Seat and Battery Fittings (Standard) ... ..	YX12	Horn Ring—Steering Column Control ... ..	W22 - W23
Rear Seat and Battery Fittings ("G.T.") ... ..	YX12 - YX13	Ignition Coil ... ..	W17
Rear Trunk Fittings ... ..	YX16 - YX17	Instruments ... ..	W1 - W3
Screenwasher ... ..	YX8	Lamps ... ..	W4 - W12
Soft Trim ... ..	YX18 - YX27	Overdrive System ... ..	W22
Windscreen (Windshield) ... ..	YX7 - YX8	Spark Plugs ... ..	W18
Underframe Section ... ..	YX1	Speedometer Cables ... ..	W2
<b>BODY MOUNTING</b>			
Air Ventilation... ..	X2 - X4	Starter (Motor) ... ..	W14
Bonnet (Hood)... ..	X4 - X5	Starter Solenoid Switch ... ..	W13
Bumpers ... ..	X6	Switches ... ..	W12 - W14
Front Number Plate Hanger ... ..	X6 - X7	Voltage Regulator — Instruments ... ..	W3
Radiator Grille ... ..	X1 - X2	Warning Lamps ... ..	W3
<b>BRAKES AND CONTROLS</b>			
Brake Pipes ... ..	Q12	Windscreen (Windshield) Wiper ... ..	W20 - W21
Brake Pedal ... ..	Q13 - Q14		
Brake Rods ... ..	Q17 - Q18		
Front Brakes (Disc) ... ..	Q1		

# INDEX—continued

	Page No.		Page No.
<b>ENGINE (Motor) UNIT—Series I, II, III and IV</b>		<b>ENGINE (Motor) AUXILIARIES (1725)</b>	
Big End Bearing Set ... ..	A4 - A5	Air Cleaner ... ..	AA9
Conn. Rod, Less Bearing ... ..	A4	Drain Tap ... ..	AA10
Camshaft ... ..	A6	Fan Belt ... ..	AA10
Camshaft Bearings ... ..	A1	Fan Blades ... ..	AA10
Crankshaft ... ..	A5	Front Engine Mounting ... ..	AA11
Cylinder Block ... ..	A1	Manifolds ... ..	AA8
Cylinder Head ... ..	A10 - A11	Suction Pipe, Distributor Auto Control ... ..	AA11
Exhaust Valve ... ..	A12	Top Overhaul Gasket Set ... ..	AA8
Flywheel and Starter Ring (Gear) ... ..	A6	Oil Cooler ... ..	AA9
Inlet Valve ... ..	A12	Oil Gauge ... ..	AA11
Main Bearing Set ... ..	A5		
Oil Filter Unit ... ..	A9 - A10	<b>EXHAUST SYSTEM—Series I and II</b> ...	VI - V2
Oil Pump ... ..	A7		
Pipe—Oil Jet ... ..	A7	<b>EXHAUST SYSTEM—From Series III onwards</b>	VA1 - VA2
Pistons ... ..	A2 - A4		
Rocker Shaft ... ..	A12	<b>GEARBOX (Standard Transmission) UNIT</b>	
Sump ... ..	A8	<b>(Up to B94100000)</b>	
Thermostat ... ..	A14	1st Speed Wheel ... ..	G3
Timing Cover ... ..	A7	2nd Speed Wheel ... ..	G3
Water Pump ... ..	A13	3rd Speed Wheel ... ..	G3
		Baulking Rings ... ..	G3
		Change Speed (Gearshift) Lever Assembly ...	G6 - G7
		Crossmember, Rear Engine Mounting ...	G7
		Engine Support Bracket—Rear ... ..	G7
		Front Cover ... ..	G1
		Layshaft Cluster (Countershaft Gears) ...	G4
		Mainshaft ... ..	G2 - G3
		Primary (Clutch) Shaft (Stemwheel)... ..	G2
		Rear Cover ... ..	G1
		Reverse Idler Wheel (Gear) ... ..	G4
		Selector Shaft (Shift Rod) ... ..	G4 - G5
		Speedometer Driving Wheel (Gear) ...	G4
		Speedometer Driving Pinion ... ..	G4
		Top Cover ... ..	G5 - G6
		<b>GEARBOX (Standard Transmission) UNIT</b>	
		<b>(From B94100001)</b>	
		1st Speed Wheel ... ..	GA2
		2nd Speed Wheel ... ..	GA2
		3rd Speed Wheel ... ..	GA2
		Baulking Ring ... ..	GA2
		Change Speed (Gearshift) Lever Assembly ...	GA4
		Crossmember, Rear Engine Mounting ...	GA5
		Engine Support Bracket—Rear ... ..	GA5
		Front Cover ... ..	GA1
		Layshaft Cluster (Countershaft Gears) ...	GA2
		Mainshaft ... ..	GA2
		Primary (Clutch) Shaft (Stemwheel)... ..	GA2
		Rear Cover ... ..	GA1
		Reverse Idler Wheel (Gear) ... ..	GA3
		Selector Shaft (Shift Rod) ... ..	GA3
		Speedometer Driving Wheel (Gear) ...	GA3
		Speedometer Driving Pinion ... ..	GA5
		Top Cover ... ..	GA4

# INDEX—continued

	Page No.		Page No.
<b>GEARBOX (Automatic Transmission) UNIT</b>		Differential Units ... ..	N1 - N4
Brake Bands ... ..	H3	Driver Coupling (Companion Flange) ...	N4
Converter ... ..	H1	Hubs, c/w Bolts ... ..	N5
Converter Housing ... ..	H1	Road Wheels ... ..	N6
Engine Mounting ... ..	H7	<b>SUSPENSION—REAR</b> ... ..	S1 - S3
Extension Housing ... ..	H4	<b>REPLACEMENT SERVICE UNITS</b> ... ..	ZW
Front Clutch ... ..	H2	<b>STEERING AND CONTROLS—Series I and II</b>	
Front Pump ... ..	H1	Cows—Steering Column ... ..	R3
Front Servo ... ..	H3	Cross Tube, Centre ... ..	R5
Gearbox Unit ... ..	H1	Cross Tube, Outer ... ..	R4 - R5
Governor ... ..	H3	Handwheel ... ..	R2
Park Brake ... ..	H4	Relay Lever ... ..	R3
Planet Carrier ... ..	H2	Steering Unit ... ..	R1
Rear Clutch ... ..	H2	Support Bracket ... ..	R4
Rear Pump ... ..	H2	<b>STEERING AND CONTROLS—</b>	
Rear Servo ... ..	H3	<b>From Series III onwards</b>	
Speedometer Wheel ... ..	H3	Cows ... ..	RA3
Speedometer Pinion ... ..	H5	Cross Tube, Centre ... ..	RA4
Sump ... ..	H5	Cross Tube, Outer ... ..	RA4
Sun Wheel and Shaft ... ..	H2	Handwheel ... ..	RA2
Valve Block ... ..	H4 - H5	Relay Lever ... ..	RA3
Gearbox (Gearshift) Control ... ..	H6 - H7	Steering Unit ... ..	RA1
Gearbox Repair Kits ... ..	H8	Support Brackets ... ..	RA2
<b>NUMERICAL INDEX</b> ... ..	ZZ	<b>SUSPENSION—FRONT—Series I, II and III</b>	
<b>OVERDRIVE UNIT</b>		Axle Carrier ... ..	M2
Adaptor Plate ... ..	J4	Bump Rubber—Lower ... ..	M3
Annulus, c/w Free Wheel Outer Race ...	J3	Coil Spring ... ..	M1
Balance Pipe ... ..	J4	Crossmember ... ..	M1
Bearing Housing ... ..	J3	Hubs ... ..	M3
Clutch Cone, c/w Linings ... ..	J3	Lower Links ... ..	M3
Filter ... ..	J2	Upper Links ... ..	M1
Intermediate Case, c/w Studs ... ..	J3	Rebound Rubber—Upper ... ..	M1
Main Casing Assembly ... ..	J1	Stabilizer Bar ... ..	M4
Operating Piston ... ..	J1	Swivel Bearing—Top ... ..	M2
Operating Valve ... ..	J1	Steering Arms ... ..	M4
Pump Body ... ..	J1	Shock Absorber ... ..	M4
Planet Carrier ... ..	J3	Top Bracket ... ..	M1
Rear Cover, c/w Bushes ... ..	J4	Trunnion ... ..	M2
Relief Valve Body Assembly ... ..	J2	<b>SUSPENSION—FRONT—From Series IV</b>	
Solenoid ... ..	J3	Axle Carrier ... ..	MA2
Sun Wheel ... ..	J3	Bump Rubber—Lower ... ..	MA2
Speedometer Driving Gear ... ..	J4	Coil Spring ... ..	MA1
Speedometer Pinion ... ..	J4	Crossmember ... ..	MA1
<b>PARTS AND SERVICE PUBLICATIONS</b> ...	ZX	Hubs ... ..	MA3
<b>PETROL (Fuel) PUMP</b> ... ..	B1	Lower Links ... ..	MA2
<b>PETROL (Fuel) SYSTEM—Series I and II</b> ...	U1 - U2	Upper Links ... ..	MA1
<b>PETROL (Fuel) SYSTEM—From Series III</b>		Rebound Rubber—Upper ... ..	MA1
onwards ... ..	UA1 - UA2	Stabilizer Bar ... ..	MA3
<b>PROPELLOR SHAFT</b> ... ..	P1	Swivel Bearing—Top ... ..	MA1 - MA2
<b>RADIATOR—Series I and II</b> ... ..	T1 - T2	Swivel Bearing—Lower ... ..	MA2
<b>RADIATOR—From Series III onwards</b> ...	TA1	Steering Arms ... ..	MA3
<b>REAR AXLE AND ROAD WHEELS</b>		Shock Absorber ... ..	MA3
Axle Casing ... ..	N1	Top Bracket ... ..	MA1
Axle Shaft ... ..	N4	<b>SPECIAL ACCESSORIES</b> ... ..	ZU
Crown Wheel (Ring Gear) and Bevel Pinion	N3	<b>STANDARD PARTS</b> ... ..	ZY
		<b>TOOLS</b> ... ..	ZV

## FOREWORD

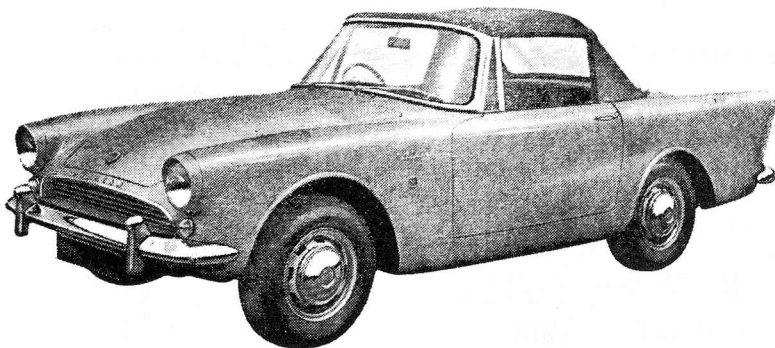
This publication contains details of Replacement Parts for the Sunbeam Alpine.

Purchasers are requested to make themselves fully acquainted with the recommended method of ordering parts, and other information contained in the following introductory pages.

All Sales are made subject to the Company's "Conditions of Sale" current at the time of delivery.



SERIES I and II



SERIES III STANDARD



SERIES IV "G.T."

# ALWAYS QUOTE CHASSIS NUMBER AND SUFFIX LETTERS

The chassis serial number will be found stamped on the chassis identification plate which is fixed to the Bonnet (Hood) Lock Platform.

<input type="radio"/>	<b>WHEN ORDERING PARTS PLEASE QUOTE</b>
CHASSIS N <sup>o</sup>	X
& ENGINE N <sup>o</sup>	
COLOUR CODE	

In the case of factory reconditioned Engine (Motor) Units a plate similar to that illustrated below will be found on the N/S (L.H.) of the Cylinder Block. The Assembly Part Number must always be quoted in addition to the chassis number when ordering replacement parts.

<b>ROOTES GROUP PARTS DIVISION.</b>		
<b>REPLACEMENT ENGINE.</b>		
ASSEMBLY PART N <sup>o</sup>	<input type="text"/>	<b>WHEN REPLACEMENT PARTS ARE ORDERED THIS ASSEMBLY PART N<sup>o</sup> MUST BE QUOTED IN ADDITION TO THE CHASSIS NUMBER</b>
ENGINE N <sup>o</sup>	<input type="text"/>	
REFERENCE N <sup>o</sup>	<input type="text"/>	
CYLINDER OVERSIZE	<input type="text"/>	
CRANK UNDERSIZE	<input type="text"/>	

Rootes Motors Ltd. have taken care in compiling this list, but they cannot accept responsibility for inaccuracies which may have occurred.

A complete list of Parts Stockists in Great Britain and N. Ireland can be obtained from Rootes Motors Ltd.

# INTERPRETATION OF THE PARTS LIST

Attention is drawn to the layout of this list, whereby it is possible to ascertain the exact composition of Assemblies and Sub-Assemblies.

As an example, if it is required to order the Connecting Rod, Bush, Bolt, Nut and Big End Bearing for the Engine (Motor), reference to Page A4 of the Parts List will show the items as follows:—

Plate Ref.	Part No.	DESCRIPTION	No. per Veh.	REMARKS
B24	1206880	CONNECTING ROD, less bearing .. .. .	4	
B25	1206882	Bush—Small end .. .. .	4	
B26	1206884	Bolt, $\frac{11}{32}$ " UNF. (special) } Big end	8	
B27	9034026	Nut, $\frac{11}{32}$ " UNF. (Nyloc) } Big end	8	
B28	5105726	BIG END BEARING SET (Standard) .. .. .	1	

The reference numbers in the left-hand column headed "Plate Ref." will enable the items to be located on the illustration preceding the Engine Section.

The Connecting Rod Assembly (less Big End Bearing), Part Number 1206880, is a Sub-Assembly and it will be seen that the descriptions of the next three items comprised in the sub-assembly are "inset" to the right.

This indicates that the Bush, Bolt and Nut are comprised in the sub-assembly and will be supplied automatically when 1206880 is ordered. The Bush (1206882), Bolt (1206884) and Nut (9034026) may of course be ordered as individual parts also, if required.

It will be noted that the next description, "Big End Bearing" is not inset to the right and this indicates that the Big End Bearings are not included in the Sub-assembly 1206880 and must be ordered separately under Part Number 5105726 or the appropriate undersize part number to requirements.

This "inset" method of indicating the parts included in Assemblies or Sub-Assemblies has been applied throughout the Parts List and it is pointed out that such an Assembly only includes those items which are "inset" below it.

Before placing orders for parts, reference should be made to the "General Instructions for Ordering Replacement Parts" included in the following pages.

It should be understood that the quantity quoted in the No. per Veh. column in the Parts List, relates only to the number fitted to each vehicle and NOT to the quantity, *i.e.*, Tens, Dozens, etc., which these may be sold in.

## ABBREVIATIONS

A/R — As required.	mm. — Millimetre.
Assy. — Assembly.	N/S — Near Side—Left Hand.
B.A. — British Association Thread.	O/D — Outside Diameter.
Bif. — Bifurcated.	O/S — Offside—Right Hand.
Bdg. Hd. — Binding Head.	o/s — Oversize.
Brkt. — Bracket.	O.H. — Oval Head.
B.S.F. — British Standard Fine Thread.	P.H. — Pan Head.
B.S.P. — British Standard Pipe Thread.	Pr. — Pair.
B.S.W. — British Standard Whitworth Thread.	R.H. — Right Hand.
B.U. — Built Up.	R.H.D. — Right-Hand Drive.
c/w — Complete with.	Rd. Hd. — Round Head.
Ch. Hd. — Cheese Head.	Rsd. Hd. — Raised Head.
C.P. — Chromium Plate.	S.W.G. — Standard Wire Gauge.
C. Pt. — Cone Point.	S. Hd. — Snap Head.
Csk. — Countersunk.	Std. — Standard.
Cyl. — Cylinder.	T.P.I. — Threads per inch.
Dia. — Diameter.	U.N.C. — Unified Coarse Thread.
D.C. — Double Coil or Double Contact.	U.N.F. — Unified Fine Thread.
F.H. — Fillister Head.	U.S. — Undersize.
I.D. — Inside Diameter.	W.W. — Wire Wheels.
L.H. — Left-Hand.	Whit. — Whitworth Thread.
L.H.D. — Left-Hand Drive.	"X" — Cross.
M-E — Micro Element.	



## FOR THE ATTENTION OF ALL DEALERS

# Notes on Maintenance of Parts List

### 1. AMENDMENTS

Amendment Sheets will be issued in respect of this Parts List each Calendar month, if necessary, and should be filed in the Parts List ring binder—in front of the main publication.

Each monthly Amendment will be cumulative in regard to this particular Parts List and new issues will supersede previous Amendments—this method being similar to that already in use in respect of Master Price List Supplements.

To obviate the necessity of recording Parts List Amendments on the page affected, a supply of small gummed labels has been made available for cross reference purposes.

This label reads "REFER TO AMENDMENT" and should be affixed to each Parts List Page affected by an Amendment, so that when using the List attention is drawn to the necessity of referring to the Amendment Sheets already in front of the Main Publication.

A space has also been provided at the foot of each printed Parts List page to enable users to record minor amendments or remarks if required.

### 2. ISSUE OF REPRINTED PAGES

In addition to the Amendment Sheets (issued each Calendar month, if required) certain Pages of the Parts List itself may be reprinted from time to time. These new pages will be distributed at intervals of three months.

For example, if a major modification or addition is notified by Amendment Sheet in, say January, and the next issue of Reprinted Parts List Pages is not due to be distributed until March, the details of the modification will appear in the Amendments issued for January and February only. The March distribution would include either reprinted Parts List Pages and/or additional Pages so as to incorporate the details in the main publication—thus making it unnecessary to retain the same details in the cumulative Amendment Sheets.

### 3. FILING OF REPRINTED AND ADDITIONAL PAGES

The importance of filing "reprinted" pages, and additional pages in the correct position (and in the correct Parts List) cannot be over-emphasized, and the following guidance is given:—

#### (a) Colour Identification

Each Page is overprinted with vertical coloured lines in the right hand margin and all subsequent re-issued or additional pages for this publication will be overprinted with vertical lines of the same colour.

#### (b) Publication Number

It will be noted that the Part Number of the complete Publication is printed at the top of each page. This same number will be printed on all re-issued or additional pages, as a precaution against incorrect filing.

#### (c) Sectional Index

Each Section is allocated a letter, and all sections are filed in strict Alphabetical Sequence. Page numbering within each Section is based on the Section letter—thus the first Section ENGINE (Motor) UNIT is allocated the letter "A" and page numbering for that Section commences at Page A1.

#### (d) Illustration Pages

These precede the Section to which they apply, and in addition to the coloured identification lines and the Publication number, the Section to which each Illustration is applicable is clearly indicated at the foot of each page (Example : PLATE "A" — SECTION "A").

#### (e) Re-issued Pages

As and when it becomes necessary to re-print individual pages these will be clearly marked "2nd ISSUE" and, of course, must be filed in place of the original page which should then be destroyed. Similarly, a page marked "3rd ISSUE" must take the place of the same Page Number marked "2nd ISSUE", and so on.

# GENERAL INSTRUCTIONS FOR ORDERING REPLACEMENT PARTS

To avoid delay through inaccurate interpretation of orders, it is of great importance that the information detailed in the following paragraphs be quoted.

## CAR TYPE

- (a) *Model.*
- (b) *Chassis Number.*
- (c) *Engine (Motor) Number.* Particularly important if the car has been fitted with a Factory Reconditioned Unit.
- (d) *The Body Style.* Required when Body Replacements are being ordered.

## PARTS REQUIRED

- (a) *Part Number and Description.* Obtained by reference to the Parts List.
- (b) *Quantity.* Ordering in "sets" is misleading. A specific statement as to the exact quantity of each part should be given.
- (c) *Offside or Nearside (Right-Hand or Left-Hand), Front or Rear.* In view of the difference of opinion which appears to exist as to which way the car is faced when describing for example, a Wing (Fender) as right or left, customers are requested to utilise the expressions "offside" or "nearside" (abbreviated as O/S or N/S) the offside being the Driver's side (right-hand drive car). These instructions apply particularly to such items as Wings (Fenders) Door Handles, Steering Arms, etc.
- (d) *Right-Hand Drive and Left-Hand Drive.* All orders will be executed as R.H.D. except when specifically marked Left-Hand Drive. The abbreviation "L.H.D." is sufficient.

## PATTERNS

If doubt exists as to the name or part number, a dimensioned sketch will assist in the interpretation of the order, alternatively the old part should be sent as a pattern. When supplied as patterns, parts should be labelled indicating the address of the

sender, together with any reference such as Order Number, etc. Old parts sent as patterns will not be returned unless instructions to that effect accompany the order. Such parts will be scrapped after retention for a period of one week.

## FIRE

Although every precaution is taken against fire, we do not accept liability for any damage which may be caused by fire to any vehicle or part thereof entrusted to us for any purpose whatsoever.

## PRICES

Current retail prices are made available to Distributors (Overseas) or Parts Stockists (Great Britain) by means of the Master Price List and its Supplements, which are issued at regular intervals.

All prices quoted in the Master Price List are subject to alteration without notice, and are for delivery at works. Postage, Carriage, Packing and Transit Insurance may be charged extra.

## SPECIAL NOTES FOR OWNERS

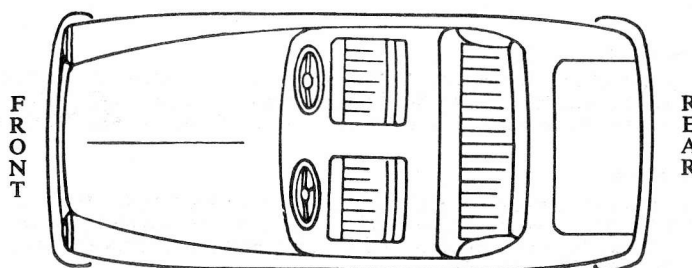
*It is in the owner's interest that all orders for replacement parts are placed with the nearest Distributor (Overseas) or Parts Stockists (Great Britain) in preference to ordering direct from the Company.* This will not only obviate delays in transit and carriage charges, but also eliminate delays which are inevitable when the Company receives a large volume of individual orders.

Distributors (Overseas) and Parts Stockists (Great Britain) are under contractual obligation to maintain a comprehensive range of Parts for the convenience of Traders and Owners in their respective territories. The primary function of Rootes Motors Ltd. is to meet the bulk demand for Replacement Parts made by Distributors (Overseas) and Parts Stockists (Great Britain).

## SPECIAL NOTES FOR DISTRIBUTORS AND PARTS STOCKISTS

Special instructions are issued to Home Market Main Parts Stockists and Overseas Distributors from time to time, and these should always be strictly observed.

RIGHT-HAND SIDE (R.H.) or OFFSIDE (O/S)



LEFT-HAND SIDE (L.H.) or NEAR SIDE (N/S)  
(Right-hand drive or Left-hand drive vehicles)